

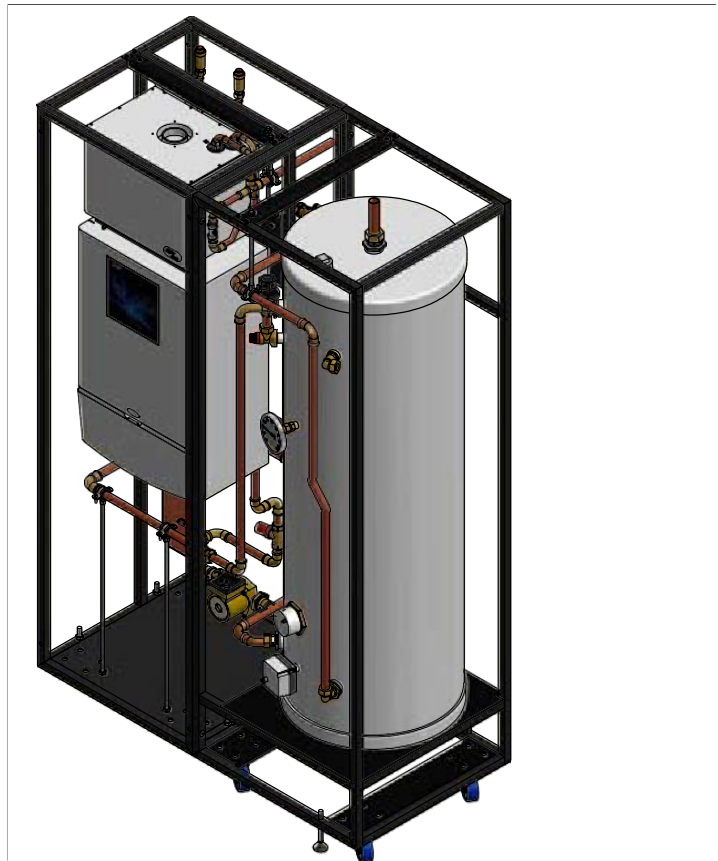
Blade Water Heater Plus Incorporating Flue Heat Recovery

The Blade Water Heater Plus has been designed to provide an effective solution for delivering hot water to maintain the optimum hot water requirement for any size of premises. The boiler/cylinder size combination would be determined by the hot water demand for the building and services available for each site.

Full technical details and designs would be produced for each site.

This unit can be used with either LPG or Nat Gas boilers and is ideal as a replacement for the traditional heating and hot water systems.

Flue heat recovery preheats the incoming water to further increase overall efficiencies



30/200P MODEL ILLUSTRATED

This range of water heater plus can be supplied with 30kW, 40kW, 50kW, 70kW, 90kW and 115kW boilers in conjunction with 100litre, 200litre and 300litre cylinders giving a range of model combinations to suit each site. All models can be supplied with space heating

- Space efficient with reduced cylinder size and high recovery cylinder
- Reduces the risk of legionella with build-in anti-stratification facility
- Suitable for mains pressure systems
- Standardised modular design pre-configured factory assembled and tested prior to delivery to site reduces installation, commissioning and down time.
- The standard module design with uniform connections locations makes replacement of future upgrades very cost effective
- The freestanding self-contained rigid frame format allows Blades to be easily integrated into existing plant rooms during the boiler replacement program.
- 10year warranty and ERP compliant boilers all other component 2 year warranty
- Unique Stainless Steel cylinder with life time warranty comes complete with optional 3kW or 6kW immersion heater
- All major components readily accessible for easy maintenance or future replacement

BLADE WATER HEATER PLUS TECHNICAL DETAILS

MODEL	30/100P	30/200P	30/300P	40/200	40/300	50/200P	50/300P	70/200P	70/300P	90/200P	90/300P	115/200P	115/300P
Boiler Size	30	30	30	38	38	50	50	70	70	90	90	115	115
Cylinder Capacity	100	200	300	300	300	200	300	200	300	200	300	200	300
Total Frame Length	600	1235	1235	1235	1235	1400	1400	1400	1400	1400	1400	1400	1400
Total Frame Width	600	600	600	600	600	700	700	700	700	700	700	700	700
Total Frame Height	1890	1890	1890	1890	1890	1890	1890	1890	1890	1890	1890	1890	1890
Weight Empty	94	160	170	160	170	220	230	220	230	300	310	300	310
Weight Full	214	376	460	376	460	450	550	450	550	525	625	525	625
SAP/SEDBUK seasonality efficiency 2009	89	89	89	89	89	88.5	88.5	88.6	88.6	88.7	88.7	88.5	88.5
Nat Gas Consumption (max)	3.45	3.45	3.45	4.13	4.13	5.43	5.43	7.4	7.4	9.77	9.77	12.07	12.07
LPG Consumption	4.95	4.95	4.95	5.92	5.92	7.7	7.7	10.4	10.4	13.8	13.8	17	17
Heat Up from Cold 10°C	12	23.5	35	19	27.5	14	21	10	15	8	12	6	9.5
Variable Recovery	*	*	*	*	*	*	*	*	*	*	*	*	*
minutes													
Cold Water Connection Copper	22	22	22	22	22	28	28	28	28	35	35	35	35
Hot Water Connection Copper	22	22	22	22	22	28	28	28	28	35	35	35	35
DHW Return Connection Copper	22	22	22	22	22	22	22	22	22	28	28	28	28
Gas Connection Copper	22	22	22	22	22	28	28	28	28	28	28	28	28
Condensate Connection Plastic	35	35	35	35	35	35	35	35	35	35	35	35	35
Immersion Heater (back up only)	3	3	3	3	3	3	3	3	3	3	3	3	3
Total Electrical Consumption	205	205	205	205	205	230	230	270	270	465	465	505	505

* Denotes:- once the cylinder is up to operating temperature the cylinder recovery rate is variable dependant on HW draw off and water main temperature
 However owing to our progressive heat gain system this recovery rate will be significantly reduced by up to 40% than the heat time quoted.
 Flue heat recovery further increases efficiency by up to another 10% by pre heating the incoming water main